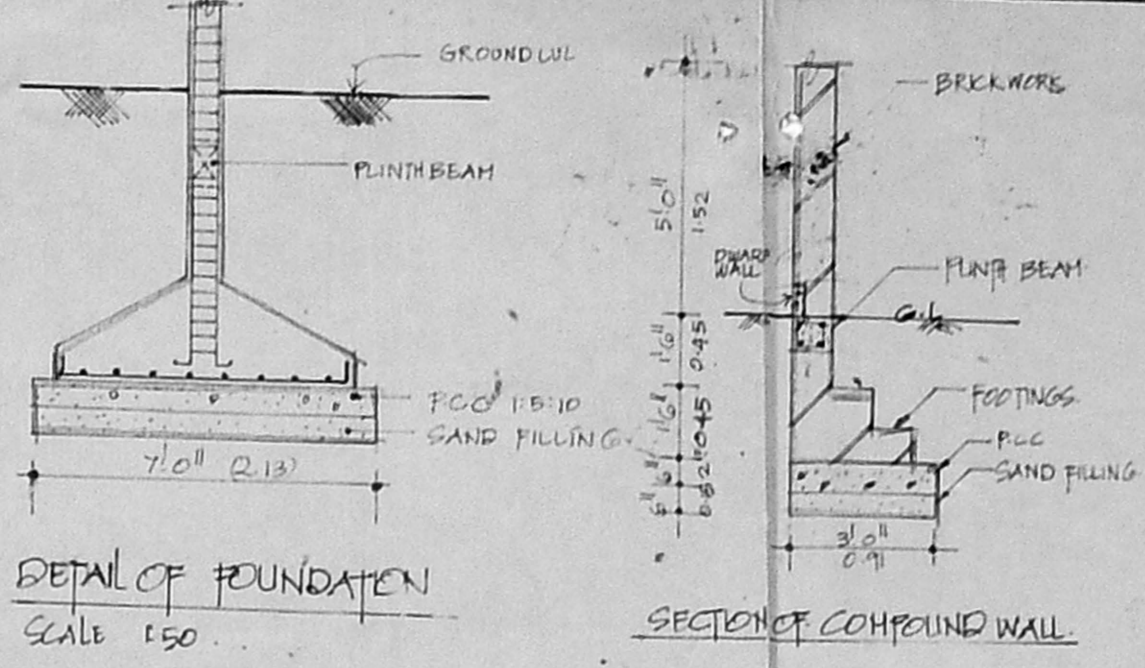
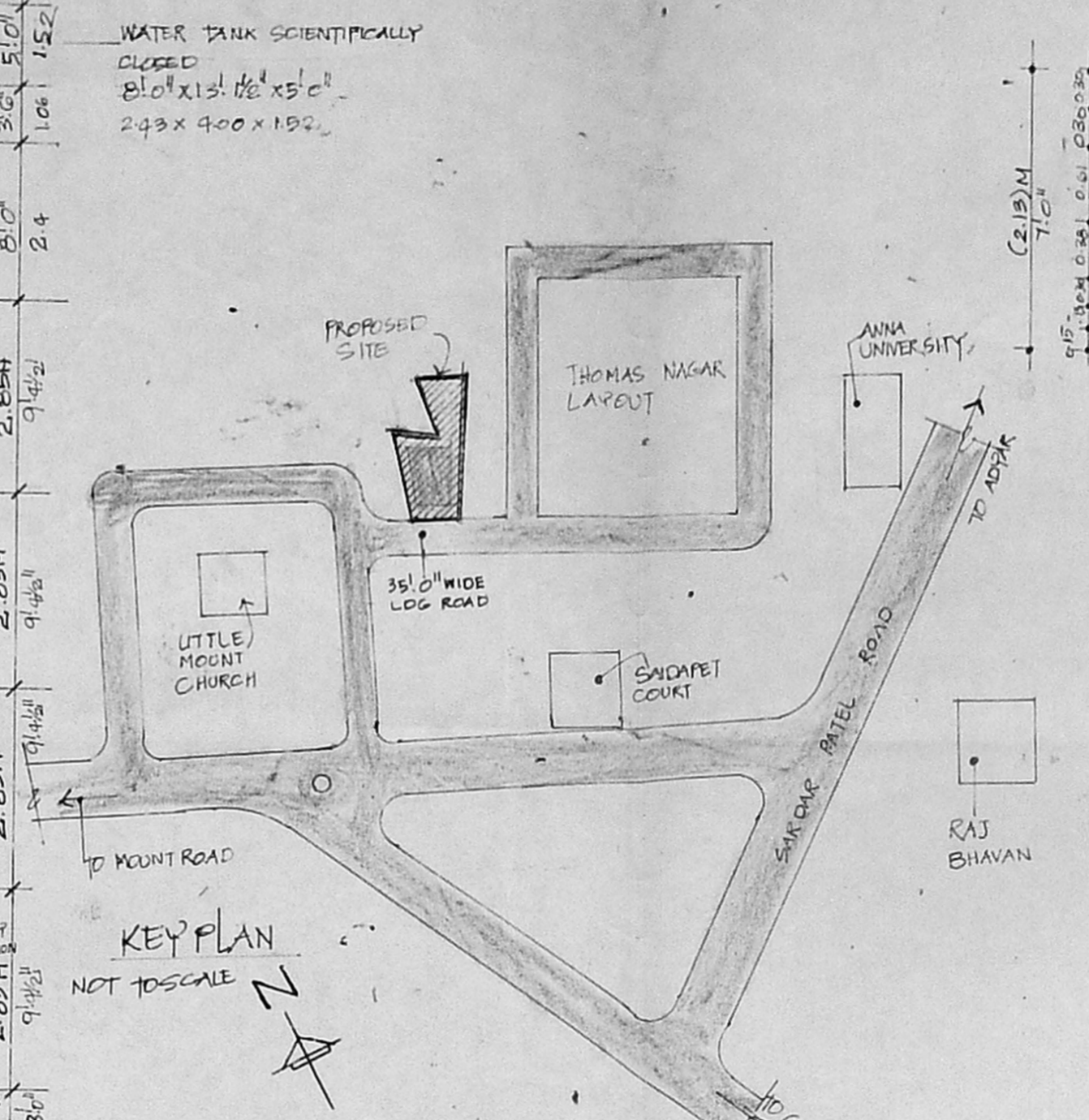
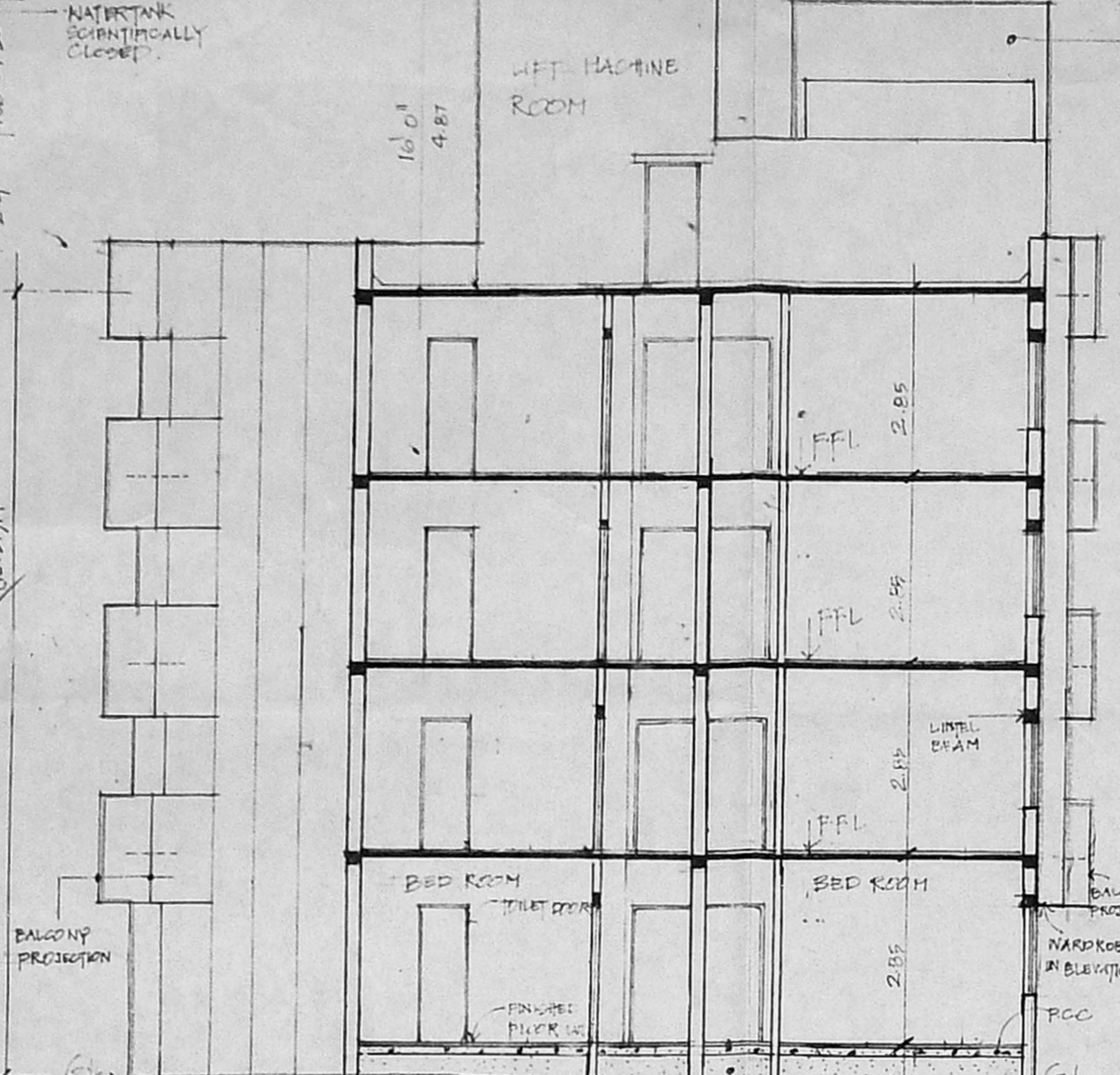
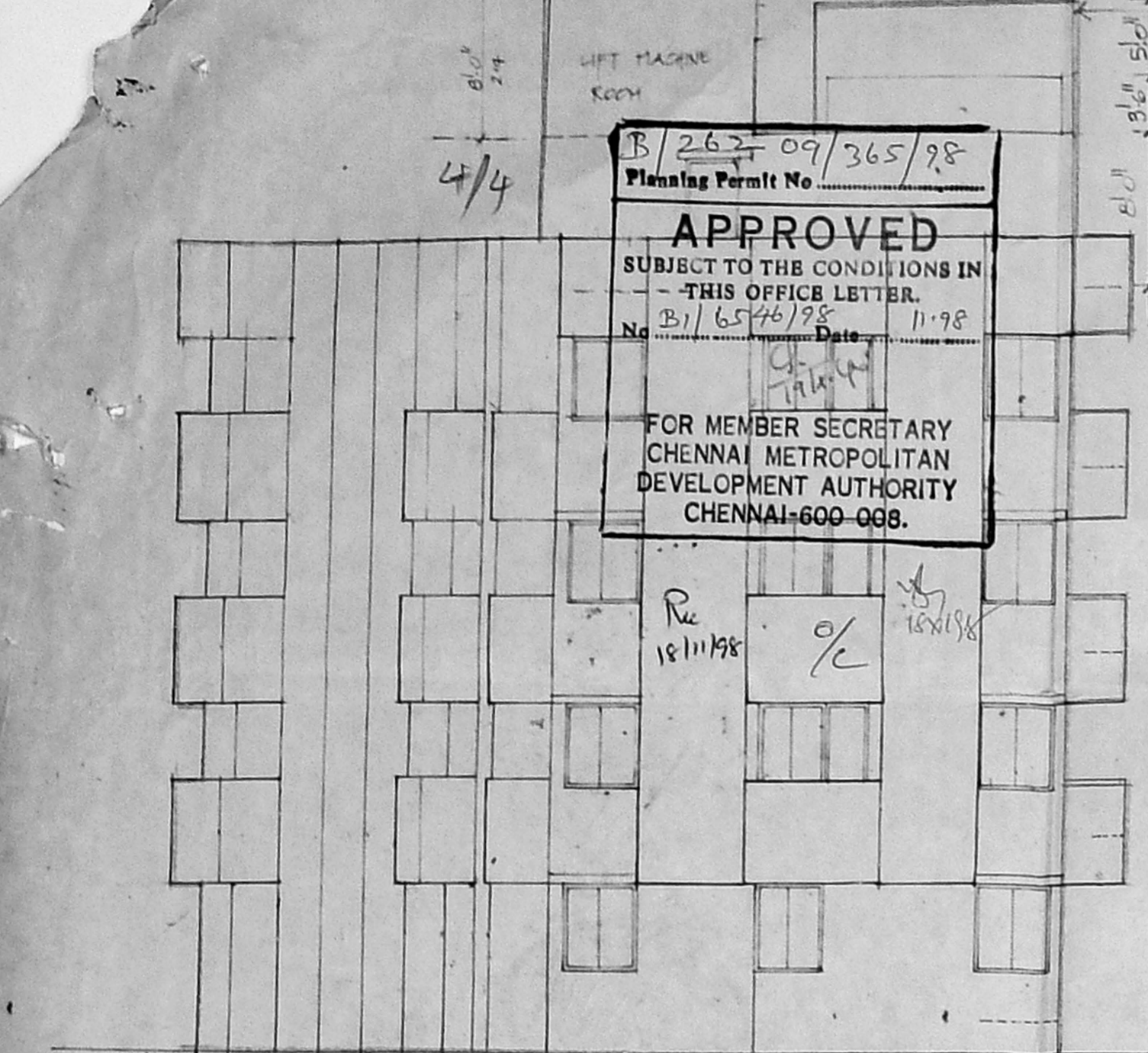


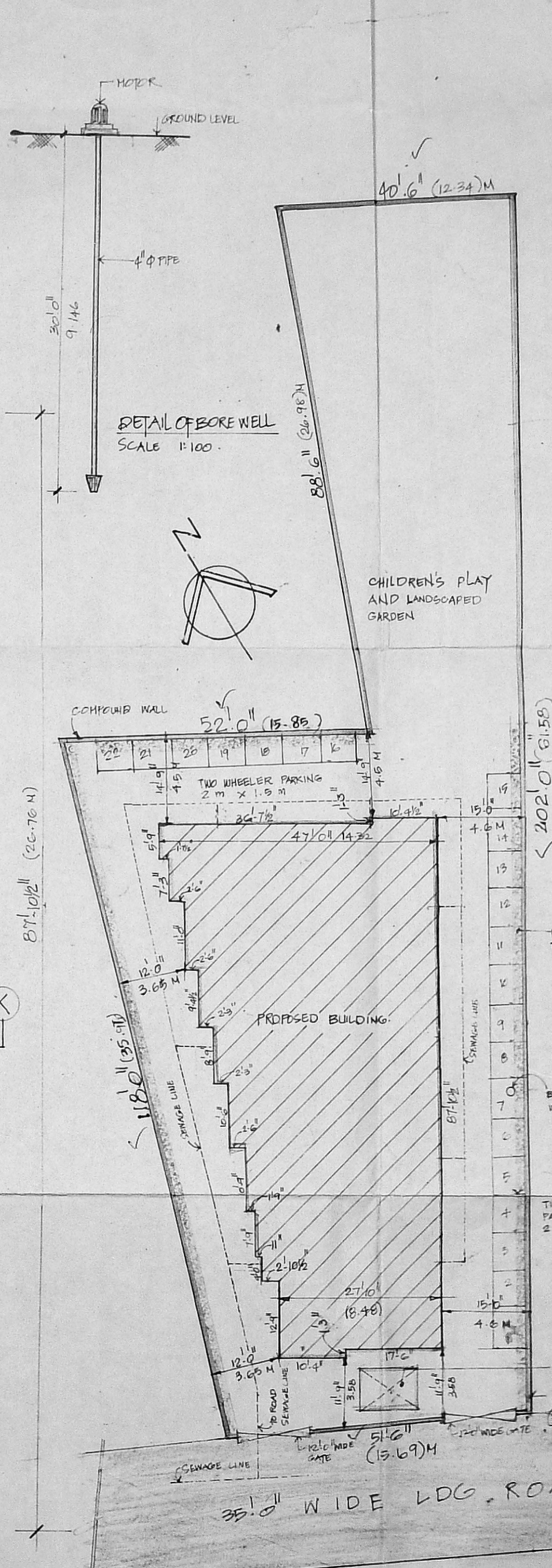
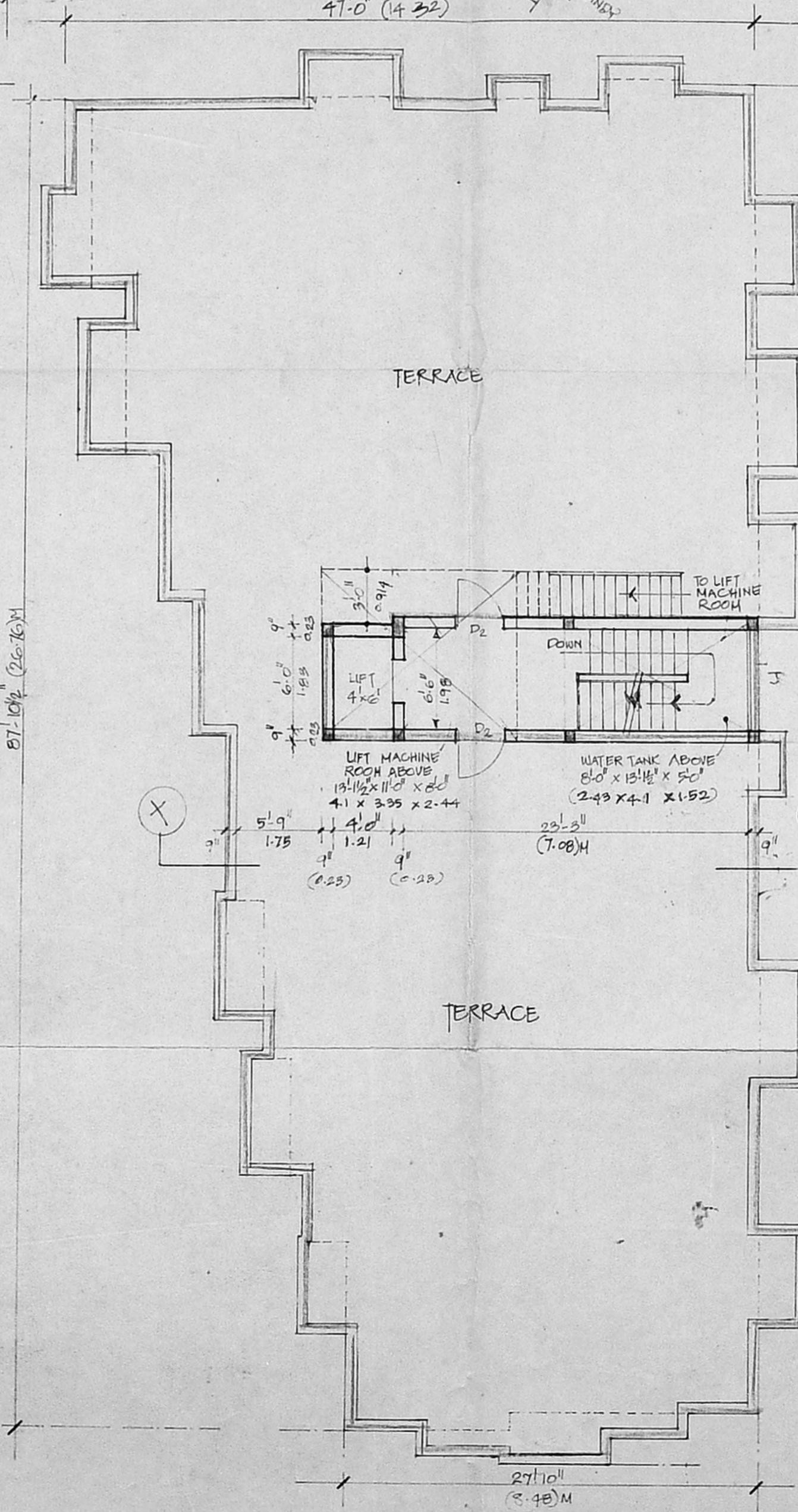
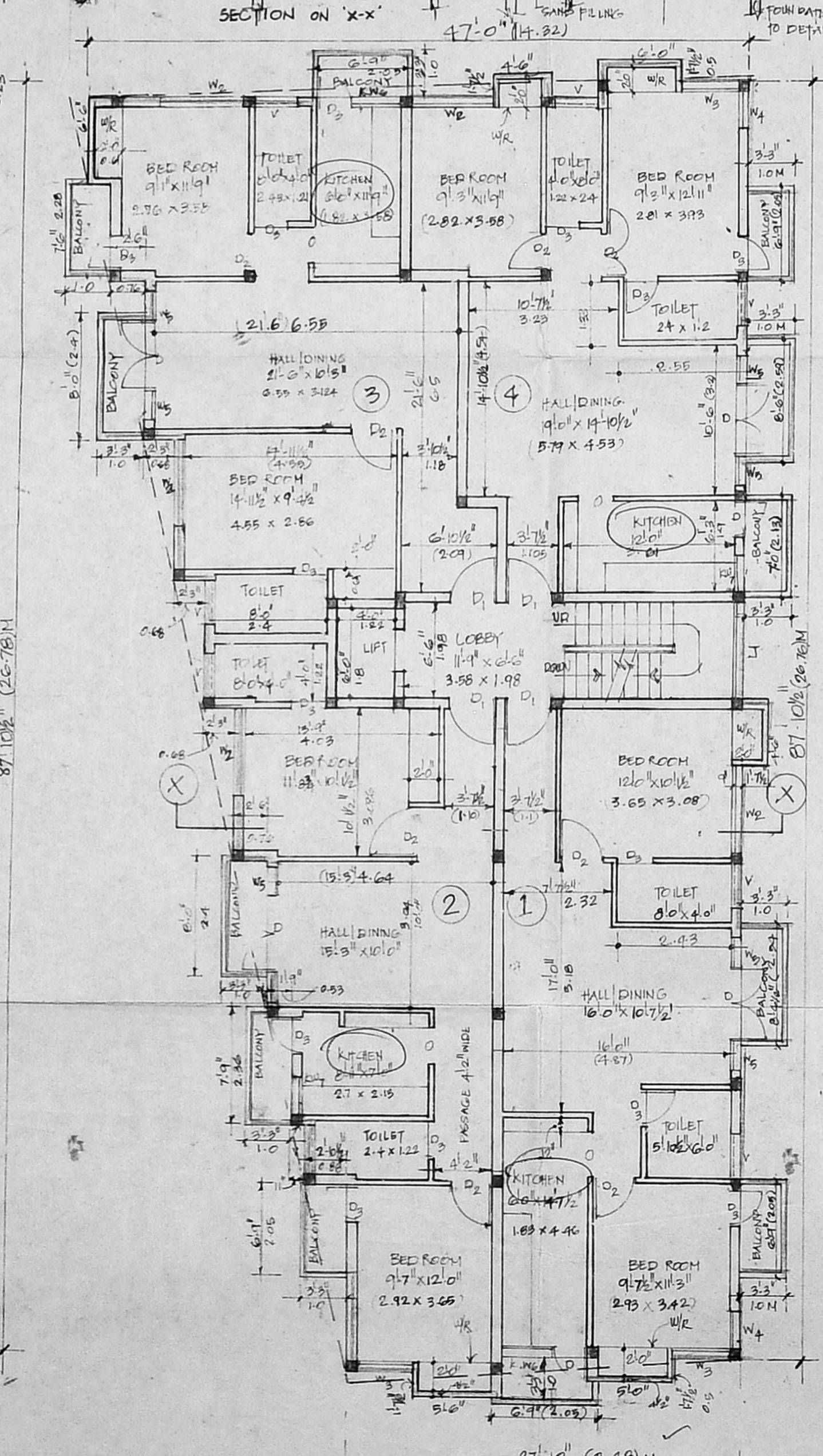
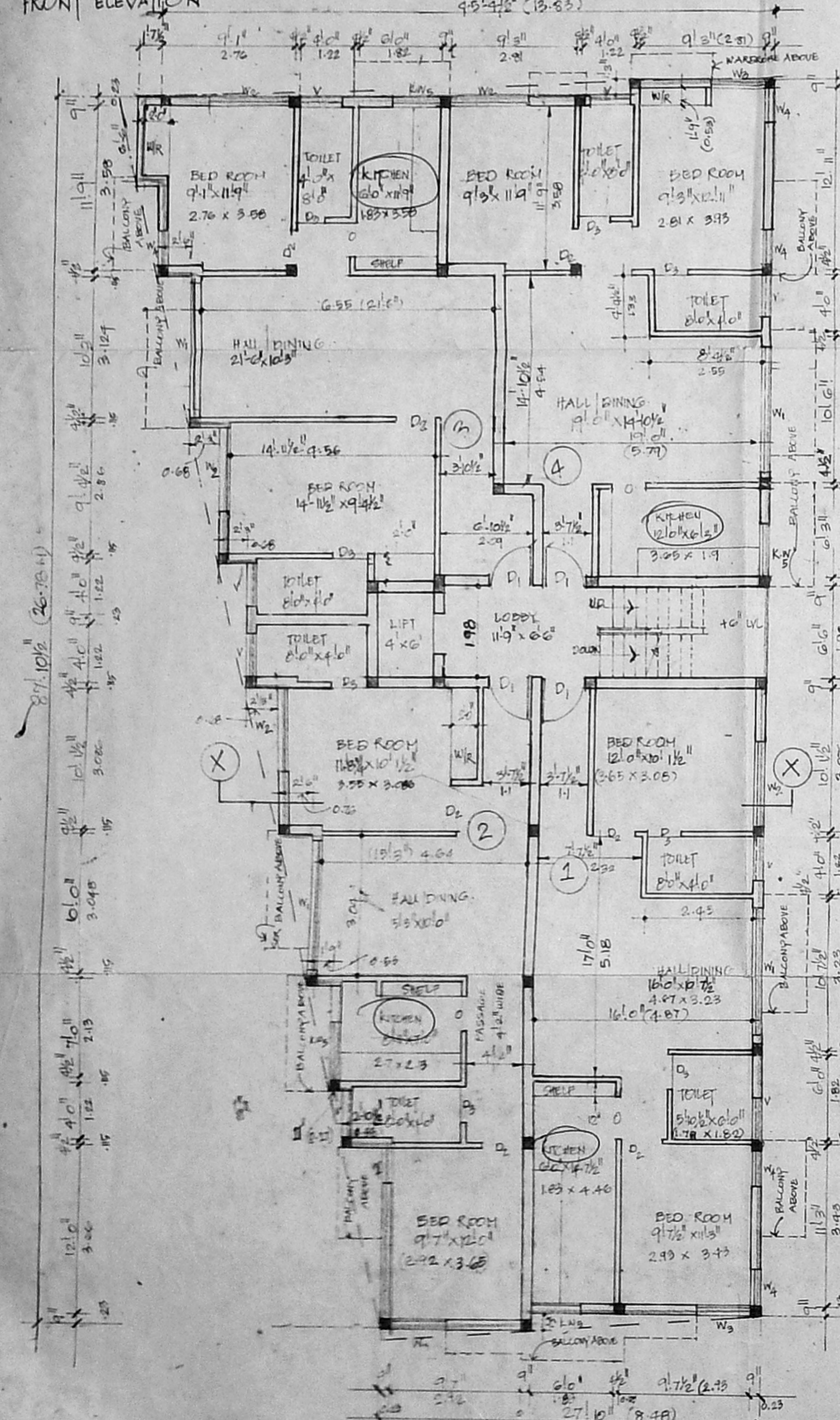
B/267/09/365/98
 Planning Permit No.
APPROVED
 SUBJECT TO THE CONDITIONS IN
 THIS OFFICE LETTER.
 No. B/1/6546/98 Date 11.98
 FOR MEMBER SECRETARY
 CHENNAI METROPOLITAN
 DEVELOPMENT AUTHORITY
 CHENNAI-600 008.



CMDA (B)/PP No. 1
 C. No. 21/6546/98
 RAIN WATER HARVESTING PIT

Scrutiny P. A. 15/11/98

A.P. [Signature]



PLAN SHOWING THE
 PROPOSED APARTMENTS AT
 NO 68 OF LDG ROAD
 BEARING T.S. NO 39/2
 BLOCK NO 2 OF VENKATAPURAM
 REVENUE VILLAGE,
 LITTLE MOUNT
 CHENNAI-600 015.

SPECIFICATIONS.

TEAK WOOD USED FOR FLOORS, WINDOWS AND VENTILATORS
 GOOD BURNED BRICKS USED FOR ALL STRUCTURE
 GREY AND WHITE MOSAIC FOR FLOORING
 EXCEPT TOILET
 REINFORCED CONCRETE COLUMNS AND BEAMS HAVE BEEN USED FOR S. STRUCTURE
 WEARING COURSE - ONE SET OF PRESSED TILES LAID OVER A BED OF BRICK JELLY LIME CONCRETE WITH CRUDE OIL LAID TO SLIP.

JOINERY SCHEDULE

Q. NO.	DESCRIPTION	QTY	UNIT
1	DOOR (OPEN)	21	M ²
2	DOOR	21	M ²
3	DOOR	21	M ²
4	DOOR	21	M ²
5	WINDOW	21	M ²
6	WINDOW	21	M ²
7	WINDOW	21	M ²
8	WINDOW	21	M ²
9	WINDOW	21	M ²
10	WINDOW	21	M ²
11	WINDOW	21	M ²
12	WINDOW	21	M ²
13	WINDOW	21	M ²
14	WINDOW	21	M ²
15	WINDOW	21	M ²
16	WINDOW	21	M ²
17	WINDOW	21	M ²
18	WINDOW	21	M ²
19	WINDOW	21	M ²
20	WINDOW	21	M ²
21	WINDOW	21	M ²
22	WINDOW	21	M ²
23	WINDOW	21	M ²
24	WINDOW	21	M ²
25	WINDOW	21	M ²
26	WINDOW	21	M ²
27	WINDOW	21	M ²
28	WINDOW	21	M ²
29	WINDOW	21	M ²
30	WINDOW	21	M ²
31	WINDOW	21	M ²
32	WINDOW	21	M ²
33	WINDOW	21	M ²
34	WINDOW	21	M ²
35	WINDOW	21	M ²
36	WINDOW	21	M ²
37	WINDOW	21	M ²
38	WINDOW	21	M ²
39	WINDOW	21	M ²
40	WINDOW	21	M ²
41	WINDOW	21	M ²
42	WINDOW	21	M ²
43	WINDOW	21	M ²
44	WINDOW	21	M ²
45	WINDOW	21	M ²
46	WINDOW	21	M ²
47	WINDOW	21	M ²
48	WINDOW	21	M ²
49	WINDOW	21	M ²
50	WINDOW	21	M ²
51	WINDOW	21	M ²
52	WINDOW	21	M ²
53	WINDOW	21	M ²
54	WINDOW	21	M ²
55	WINDOW	21	M ²
56	WINDOW	21	M ²
57	WINDOW	21	M ²
58	WINDOW	21	M ²
59	WINDOW	21	M ²
60	WINDOW	21	M ²
61	WINDOW	21	M ²
62	WINDOW	21	M ²
63	WINDOW	21	M ²
64	WINDOW	21	M ²
65	WINDOW	21	M ²
66	WINDOW	21	M ²
67	WINDOW	21	M ²
68	WINDOW	21	M ²
69	WINDOW	21	M ²
70	WINDOW	21	M ²
71	WINDOW	21	M ²
72	WINDOW	21	M ²
73	WINDOW	21	M ²
74	WINDOW	21	M ²
75	WINDOW	21	M ²
76	WINDOW	21	M ²
77	WINDOW	21	M ²
78	WINDOW	21	M ²
79	WINDOW	21	M ²
80	WINDOW	21	M ²
81	WINDOW	21	M ²
82	WINDOW	21	M ²
83	WINDOW	21	M ²
84	WINDOW	21	M ²
85	WINDOW	21	M ²
86	WINDOW	21	M ²
87	WINDOW	21	M ²
88	WINDOW	21	M ²
89	WINDOW	21	M ²
90	WINDOW	21	M ²
91	WINDOW	21	M ²
92	WINDOW	21	M ²
93	WINDOW	21	M ²
94	WINDOW	21	M ²
95	WINDOW	21	M ²
96	WINDOW	21	M ²
97	WINDOW	21	M ²
98	WINDOW	21	M ²
99	WINDOW	21	M ²
100	WINDOW	21	M ²

AREA STATEMENT

NO.	DESCRIPTION	AREA (SQ. FT.)	AREA (SQ. M.)
1	PLOT EXTENT	10063	935.22
2	GROUND FLOOR AREA	3232.32	300.4
3	FIRST FLOOR AREA	3558.75	330.75
4	SECOND FLOOR AREA	3558.75	330.75
5	THIRD FLOOR AREA	3558.75	330.75
	TOTAL	13907.17	1292.67
	PLOT COVERAGE	35.36%	✓
	F.S.I.	1:38	✓

COLOUR INDEX

PROPOSED WORK: [Symbol] SCALE 1:100
 EXISTING ROAD: [Symbol] RA 15: 28.11.96
 SITE BOUNDARY: [Symbol] PRK: 100mm

V. Balaram
 MEMBER SECRETARY (V. BALARAMAN)

MEENA CHANDRA SEKHARAN
 REGISTERED ARCHITECT
 MCA No. CA/95/16712
 RA No. 297
 4, 7 AVENUE HARRISTON ROAD,
 CHENNAI - 600 015